

USE PROSET FIRESTOP PENETRATORS, OR EQUAL FOR ALL PIPE PENETRATIONS AND FIXTURE OPENINGS THROUGH FIRE RATED FLOORS AND WALLS. BUILDING CODE REQUIRED SYSTEM NUMBERS ARE LISTED & DETAILED BELOW. BELOW SYSTEM NUMBERS CAN BE FOUND IN THE WARNOCK HERSEY DIRECTORY OR CAN BE CHECKED ON THE WARNOCK HERSEY WEBSITE AT WWW.ITSQS.COM

PLUMBING – PLASTIC DWV
PVC – ABS CPVC – CONDENSATE

CATALOG DRAWING NUMBERS—TOP LINE W.H. or U.L. SYSTEMS NUMBERS—BOTTOM LINE

TYPE OF PLASTIC PENETRATION	TYPE OF FIRE RATED CONSTRUCTION:					
	CONCRETE ON WOOD FORMS	CONCRETE ON TUNNEL OR PAN FORMS	CONCRETE ON CORRUGATED METAL DECK	PRECAST OR EXISTING CONCRETE	FLOOR, CEILING ASSEMBLIES	GYPSUM WALLS
BATHTUB	C-6211-A PS/PH 120-11	C-6211-B PS/PH 120-11	C-6210-C PS/PH-120-02	C-6210-D PS/PH-120-02	C-6211-E PS/PH-120-06	
BIDET	C-6610-A PS/PH 120-7	C-6610-B PS/PH 120-7	C-6610-C PS/PH 120-7	C-6610-D PS/PH 120-7		
CLEANOUT (FLOOR)	C-6800-A PS/PH 120-02	C-6800-B PS/PH 120-02	C-6800-C PS/PH 120-02	C-6800-D PS/PH 120-02		
CONDENSATE DRAIN PVC OR CPVC	A-1002-A PHV 120-04	A-1002-B PHV 120-04	A-1002-C PHV 120-04	A-1002-D PHV 120-04	A-1005-E PHV 120-04	A-1005-F PHV 120-04
FLOOR DRAIN	C-6510-A PS/PH 120-07	C-6510-B PS/PH 120-07	C-6500-C PS/PH 120-02	C-6500-D PS/PH 120-02		
HORIZONTAL ABS OR PVC	C-9049-F			C-9049-D		C-9049-F
HORIZONTAL P.P./P.E. OR P.B.	C-9049-F PV 120-06			C-9049-D PV 120-06		C-8101-F PV 120-06
HUB DRAIN OR PRECAST DRAINS	C-6110-A PS/PH 120-07	C-6110-B PS/PH 120-07	C-6110-C PS/PH 120-07	C-6110-D PS/PH 120-07		
LAV. & SINK STUB OUTS						C-8112-F PS/PV-120-02
PLANTER DRAIN	C-6420-A PS/PH 120-07	C-6420-B PS/PH 120-07	C-6420-C PS/PH 120-07	C-6420-D PS/PH 120-07		
ROOF DRAIN	C-6710-A PS/PH 120-07	C-6710-B PS/PH 120-07	C-6700-C PS/PH 120-07	C-6700-D PS/PH 120-07		
ROOF STACK TERMINAL	C-4807-A PS/PH 120-01	C-4807-B PS/PH 120-01	C-4807-C PS/PH 120-01	C-4807-D PS/PH 120-01		
SHOWER DRAIN	C-6330-A PS/PH 120-07	C-6330-B PS/PH 120-07	C-6320-C FC-2013	C-6320-D FC-2013	C-6211-E PS/PH 120-06	
STACKS PVC OR ABS	C-9049-A PHV 180-03	C-9049-B PHV 180-03	C-9049-C PH 120-14	C-9049-D PH 120-14	C-9049-F PV 120-06	
VERTICAL P.P./P.E. OR P.B.	C-9049-A PHV 180-03	C-9049-B PHV 180-03	C-9049-C PH 120-14	C-9049-D PH 120-14		
WATER CLOSET (FLOOR)	C-4401-A PH 120-15	C-4401-B PH 120-15	C-4401-C PH 120-15	C-4401-D PH 120-15		C-3401-F PH 120-12
WATER CLOSET (WALL)	C-4490-A PHV 180-03	C-4490-B PHV 180-03	C-4490-C PH 120-14	C-4490-D PH 120-14		PS/PH 120-03

PLUMBING – WATER & GAS
COPPER – STEEL – CPVC – POLYBUTYLENE

CATALOG DRAWING NUMBERS—TOP LINE U.L. or W.H. SYSTEMS NUMBERS—BOTTOM LINE

TYPE OF WATER & GAS PENETRATION	TYPE OF FIRE RATED CONSTRUCTION:					
	CONCRETE ON WOOD FORMS	CONCRETE ON TUNNEL OR PAN FORMS	CONCRETE ON CORRUGATED METAL DECK	PRECAST OR EXISTING CONCRETE	FLOOR, CEILING ASSEMBLIES	GYPSUM WALLS
COPPER	A-1010-A PS/PH 120-03	A-1010-B PS/PH 120-03	A-1010-C PS/PH 120-03	A-1010-D PS/PH 120-03	A-1011-E PS/PH 120-05	A-1012-F PS/PV 120-01
CPVC	A-1011-A PS/PH 120-04	A-1011-B PS/PH 120-04	A-1011-C PS/PH 120-04	A-1011-D PS/PH 120-04	A-1011-E PS/PH 120-05	A-1012-F PS/PV 120-01
INSULATED PIPE CHILLED WATER See Drwg. A-1004-A	A-1000-A PS/PH 80-02	A-1000-B PS/PH 180-02	A-1000-C PS/PH 180-02	A-1000-D PS/PH 180-02		
POLYBUTYLENE	C-9049-A PHV 180-03	C-9049-B PHV 180-03	C-9049-C PHV 180-03	C-9049-D PHV 180-03		C-9049-F PHV 180-03
STEEL	A-1014-A PS/PH 180-01	A-1014-B PS/PH 180-01	A-1014-C PS/PH 180-01	A-1014-D PS/PH 180-01	A-1011-E PS/PH 120-04	A-1014-F PS/PV 120-01

PLUMBING – ACID WASTE DWV
DURIRON – GLASS – POLYPROPYLENE

CATALOG DRAWING NUMBERS—TOP LINE WARNOCK HERSEY NUMBERS—BOTTOM LINE

TYPE OF ACID WASTE PENETRATION	TYPE OF FIRE RATED CONSTRUCTION:					
	CONCRETE ON WOOD FORMS	CONCRETE ON TUNNEL OR PAN FORMS	CONCRETE ON CORRUGATED METAL DECK	PRECAST OR EXISTING CONCRETE	FLOOR, CEILING ASSEMBLIES	GYPSUM WALLS
DURIRON	A-1014-A PS/PH 180-01	A-1014-B PS/PH 180-01	A-1014-C PS/PH 180-01	A-1014-D PS/PH 180-01		
GLASS	A-1014-A PS/PH 180-01	A-1014-B PS/PH 180-01	A-1014-C PS/PH 180-01	A-1014-D PS/PH 180-01		
HORIZONTAL POLYPROPYLENE	C-9049-A PHV 180-03	C-9049-B PHV 180-03	C-9049-C PHV 180-03	C-9049-D PHV 180-03		C-9049-F PV 120-06
VERTICAL POLYPROPYLENE	C-9049-A PHV-180-03	C-9049-B PHV-180-03	C-9049-C PHV 180-03	C-9049-D PHV 180-03		

PLUMBING – CAST IRON DWV
CAST IRON NO-HUB – WASTE – VENT – CONDENSATE

CATALOG DRAWING NUMBERS—TOP LINE U.L. SYSTEMS NUMBERS—BOTTOM LINE

TYPE OF CAST IRON PENETRATION	TYPE OF FIRE RATED CONSTRUCTION:					
	CONCRETE ON WOOD FORMS	CONCRETE ON TUNNEL OR PAN FORMS	CONCRETE ON CORRUGATED METAL DECK	PRECAST OR EXISTING CONCRETE	FLOOR, CEILING ASSEMBLIES	GYPSUM WALLS
BATHTUB	B-6210-A PS/PH 120-02	B-6210-B PS/PH 120-02	B-6210-C PS/PH 120-02	B-6210-D PS/PH 120-02		
BIDET	B-6600-A PS/PH 120-02	B-6600-B PS/PH 120-02	B-6600-C PS/PH 120-02	B-6600-D PS/PH 120-02		
CLEANOUT (FLOOR)	B-6800-A PS/PH 120-02	B-6800-B PS/PH 120-02	B-6800-C PS/PH 120-02	B-6800-D PS/PH 120-02		
CONDENSATE DRAIN PVC OR CPVC	A-1002-A PHV-120-04	A-1002-B PHV 120-04	A-1002-C PHV 120-04	A-1002-D PHV 120-04		
FLOOR DRAIN	C-6500-A PS/PH 120-02	C-6500-B PS/PH 120-02	C-6500-C PS/PH 120-02	C-6500-D PS/PH 120-02		
HUB DRAIN OR PRECAST DRAINS	B-6100-A PS/PH 120-02	B-6100-B PS/PH 120-02	B-6100-C PS/PH 120-02	B-6100-D PS/PH 120-02		
PLANTER DRAIN	B-6400-A PS/PH 120-02	B-6400-B PS/PH 120-02	B-6400-C PS/PH 120-02	B-6400-D PS/PH 120-02		
ROOF DRAIN	B-6700-A PS/PH 120-01	B-6700-B PS/PH 120-01	B-6700-C PS/PH 120-01	B-6700-D PS/PH 120-01		
ROOF STACK TERMINAL	B-4807-A PS/PH 120-01	B-4807-B PS/PH 120-01	B-4807-C PS/PH 120-01	B-4807-D PS/PH 120-01		
SHOWER DRAIN	B-6320-A PS/PH 120-02	B-6320-B PS/PH 120-02	B-6320-C PS/PH 120-02	B-6320-D PS/PH 120-02		
STACKS THRU 6"	B-4804-A PS/PH 180-01	B-4804-B PS/PH 180-01	B-4804-C PS/PH 180-01	B-4804-D PS/PH 180-01		
STACKS THRU 10"	A-1020-A PHV 180-05	A-1020-B PHV 180-05	A-1020-C PHV 180-05	A-1020-D PHV 180-05		
WATER CLOSET (FLOOR)	B-4400-A PH 120-13	B-4400-B PH 120-13	B-4400-C PH 120-13	B-4400-D PH 120-13		
WATER CLOSET (WALL)	B-4403-A PH-120-01	B-4403-B PH 120-01	B-4403-C PH 120-01	B-4403-D PH 120-01		

MECHANICAL – FIRE PROTECTION
COPPER – STEEL – CPVC SPRINKLER

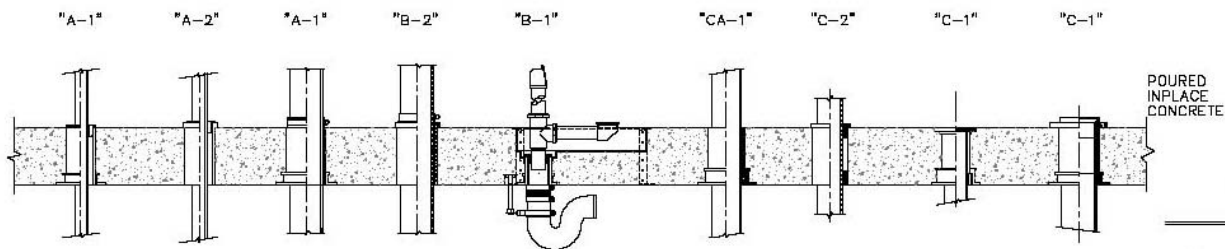
CATALOG DRAWING NUMBERS—TOP LINE U.L. or W.H. SYSTEMS NUMBERS—BOTTOM LINE

TYPE OF MECHANICAL PENETRATION	TYPE OF FIRE RATED CONSTRUCTION:					
	CONCRETE ON WOOD FORMS	CONCRETE ON TUNNEL OR PAN FORMS	CONCRETE ON CORRUGATED METAL DECK	PRECAST OR EXISTING CONCRETE	FLOOR, CEILING ASSEMBLIES	GYPSUM WALLS
COPPER	A-1010-A PS/PH 120-03	A-1010-B PS/PH 120-03	A-1010-C PS/PH 120-03	A-1010-D PS/PH 120-03	A-1011-E PS/PH 120-05	A-1012-F PS/PV 120-01
CPVC	A-1011-A PS/PH 120-04	A-1011-B PS/PH 120-04	A-1011-C PS/PH 120-04	A-1011-D PS/PH 120-04	A-1011-E PS/PH 120-05	A-1012-F PS/PV 120-01
INSULATED PIPE See Drwg. A-1004-A Or Drwg. A-1010-gf	A-1010-gf PHV20-02/PHV20-04	A-1010-gf PHV20-02/PHV20-04	A-1010-gf PHV20-02/PHV20-04	A-1010-gf PHV20-02/PHV20-04		A-1010-gf PS/PV 120-01
STEEL	A-1014-A PS/PH 180-01	A-1014-B PS/PH 180-01	A-1014-C PS/PH 180-01	A-1014-D PS/PH 180-01		A-1014-F PS/PV 120-01
TEMPERATURE CONTROL	A-1003-A PHV 120-03	A-1003-B PHV 120-03	A-1003-C PHV 120-03	A-1003-D PHV 120-03	A-1011-E PH 120-05	A-1012-F PH 120-05
REFRIGERATION	A-1003-A PHV 120-03	A-1003-B PHV 120-03	A-1003-C PHV 120-03	A-1003-D PHV 120-03	A-1011-E PH 120-05	A-1015-F PV 120-01

ELECTRICAL – PIPE & CABLES
EMT CONDUIT – CPVC – PVC – STEEL

CATALOG DRAWING NUMBERS—TOP LINE U.L. or W.H. SYSTEMS NUMBERS—BOTTOM LINE

TYPE OF ELECTRICAL PENETRATION	TYPE OF FIRE RATED CONSTRUCTION:					
	CONCRETE ON WOOD FORMS	CONCRETE ON TUNNEL OR PAN FORMS	CONCRETE ON CORRUGATED METAL DECK	PRECAST OR EXISTING CONCRETE	FLOOR, CEILING ASSEMBLIES	GYPSUM WALLS
CABLES	A-1003-A PS/PHV120-04	A-1003-B PS/PHV120-04	A-1003-C PS/PHV120-04	A-1003-D PS/PHV120-04		A-1012-F PS/PV 120-01
CPVC	A-1011-A PS/PH 120-04	A-1011-B PS/PH 120-04	A-1011-C PS/PH 120-04	A-1011-D PS/PH 120-04	A-1011-E PS/PH 120-05	A-1012-F PS/PV 120-01
EMT CONDUIT	A-1014-A PS/PH 180-01	A-1014-B PS/PH 180-01	A-1014-C PS/PH 180-01	A-1014-D PS/PH 180-01	A-1011-E PS/PH 120-05	A-1014-F PS/PV 120-01
PVC	A-1011-A PS/PH 120-04	A-1011-B PS/PH 120-04	A-1011-C PS/PH 120-04	A-1011-D PS/PH 120-04	A-1011-E PS/PH 120-05	A-1012-F PS/PV 120-01
STEEL	A-1014-A PS/PH 180-01	A-1014-B PS/PH 180-01	A-1014-C PS/PH 180-01	A-1014-D PS/PH 180-01	A-1011-E PS/PH 120-05	A-1014-F PS/PV 120-01

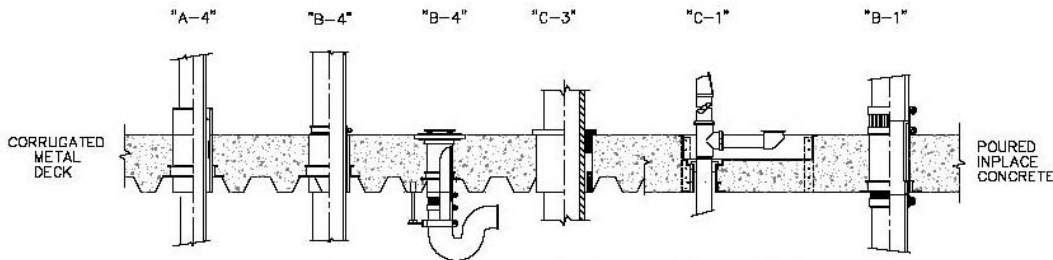
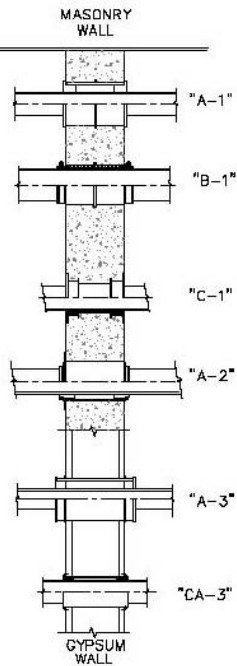


SLEEVES AND FIRESTOPPING

USE PROSET "FIRESTOP PENETRATORS", U.L. OR WARNOCK HERSEY CLASSIFIED AND LISTED IN THE BUILDING MATERIALS DIRECTORY. TESTED IN ACCORDANCE WITH THE ASTM E-814, U.L. 1479 AND CSA/ULC CAN S-115 TEST STANDARDS. USE FOR ALL APPLICABLE PIPE PENETRATIONS AND PLUMBING FIXTURE FLOOR OPENINGS THROUGH FIRE RATED FLOORS, WALLS OR FLOOR/CEILING ASSEMBLIES IN ACCORDANCE WITH THE MANUFACTURERS INSTRUCTIONS.

- A. USE SYSTEM "A" PENETRATORS FOR WATER LINES, HEATING AND COOLING LINES, FIRE STANDPIPE AND SPRINKLER LINES, TEMPERATURE CONTROL, ACID WASTE GLASS OR DURION PIPE AND ELECTRIC AND COMMUNICATION CONDUIT PENETRATING FLOORS OR WALLS.
- B. USE SYSTEM "B" PENETRATORS FOR CAST IRON OR COPPER DWV PIPES FOR STACKS AND DRAINS PENETRATING FLOORS OR WALLS.
- C. USE SYSTEM "C" PENETRATORS FOR PLASTIC DWV PIPES FOR STACKS AND DRAINS PENETRATING FLOORS OR WALLS.
- CA. USE SYSTEM "CA" PENETRATORS FOR POLYPROPYLENE ACID WASTE PIPE PENETRATING FLOORS OR WALLS.

1. USE CAST-IN-COUPLING PENETRATORS FOR POURED-IN-PLACE CONCRETE ON STEEL OR WOOD FORMS IN FLOORS OR WALLS.
2. USE C.H. PVC OR METAL COUPLING PENETRATORS FOR CORED HOLES THROUGH PRECAST OR EXISTING CONCRETE IN FLOORS OR WALLS.
3. USE P-90 WALL SLEEVE PENETRATORS FOR PIPES PASSING THROUGH GYPSUM WALLS OR FLOOR / CEILING ASSEMBLIES.
4. USE CM METAL OR PVC SLIP FLANGE CM COUPLING FOR POURED-IN-PLACE CONCRETE ON CORRUGATED METAL DECK.



FIRESTOP PENETRATOR DETAILS